

HARLO® HP8500



ENGINE

Model	John Deere - 4045TFC03 Tier 4 Final Emission Certified
Type	4 Cycle Turbocharged Diesel
Cylinders	4
Displacement	275 CID
Fuel Injection	Electronic
Fuel	Ultra Low Sulfur Diesel
Tank Capacity	24 Gallons
Cooling	Liquid Cooled
Engine Speeds	RPM
Max Speed	2400
Idle Speed	900
Horse Power	74 HP @ 2400
Maximum Torque	224FT-LB @ 1600
Water Pump Style	Integral
Engine Oil	SAE 15W - 40

TIRES

Front	16.9 x 24 (12 Ply)
Rear 4WD	12 - 16.5 (10 Ply)

ELECTRICAL

Voltage	12 Volts
Alternator	95 Amp
Battery	950 CCA
Power Plugs	Optional

MAST

Forward Tilt	33 Degrees
Backward Tilt	11 Degrees
Side Shift	3" Left / 3" Right
Easy Ride Load	Optional

HYDRAULICS

Main Pump Piston Type	Pressure Compensated
Pump Flow	35 GPM @ 2400 RPM
Tank Capacity	18.5 Gallons

POWERTRAIN

Transmission	Synchromesh Synchro - Shuttle
Gear Ratios	4 Forward / 4 Reverse
1st	5.603:1
2nd	3.480:1
3rd	1.584:1
4th	0.793:1
Travel Speeds	MPH
1st	3.9
2nd	6.2
3rd	13.9
4th	27.4
Torque Converter Ratio	2.64:1
Front / Rear Axle (4WD)	
Differential Ratio	2.33:1 / 2.46:1
Planetary Hub Ratio	6.923:1 / 6.00:1
Overall Ratio	16.15:1 / 12.80:1
Service Brake Type	Oil (Wet) Multi Disk
Parking Brake Type	Cable Activated
Parking Brake Location	Floor

WARNING LIGHTS

Equipped with a digital screen that provides fault code descriptions

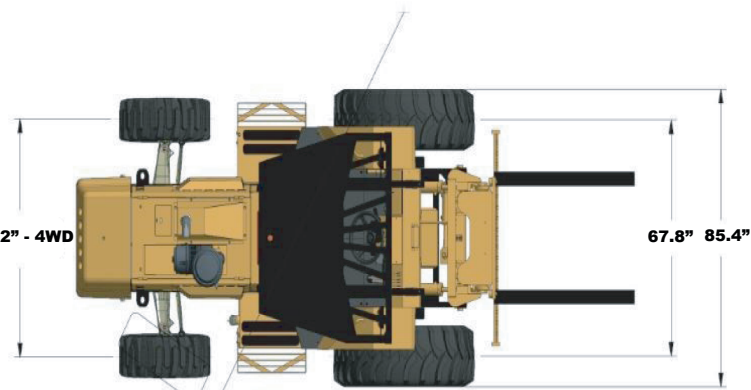
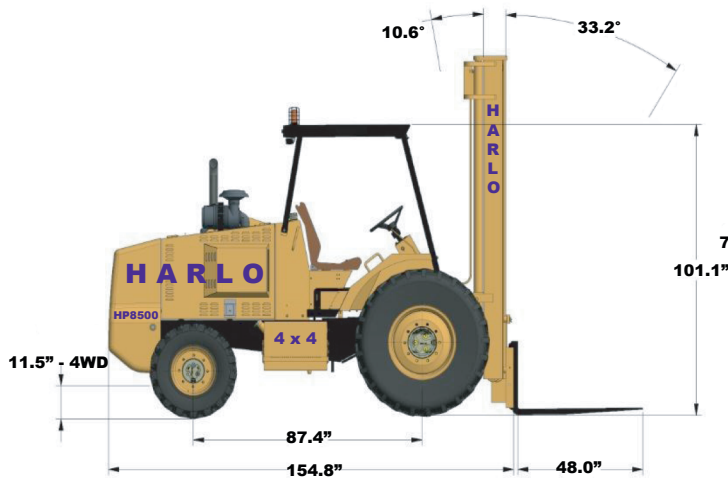
OPERATOR ENVIRONMENT

STANDARD SAFETY: Adjustable Seat Cushion - Rear View Mirror - Seatbelt - FOP Overhead Guard - See-thru Masts - A.N.S.I. B 56.6 Safety Complaint

AUDIBLE ALARMS: Backup Alarm - Horn

GAUGES: Fuel Level - Hour Meter - Voltmeter - Coolant Temperature - Tachometer - Oil Pressure

DIMENSIONS



Turning Radius
 4WD with brakes 10'-7"
 4WD without breaks 12'-9"

Lift Height	Carriage Type	Carriage Width	Stage	Overall Lowered	Overall Extended	Capacity at 24" Load Center	4WD Weight	Freelift
15' Roller	Notch ITA or Swing Carriage	60" 72" 84" 96"	2	125"	212"	8500lbs to 15'	15,803 lb	None
16' Roller	Notch ITA or Swing Carriage	60" 72" 84"	3	100"	228"	8500lbs to 12'	15,749 lb	None
						6500lbs to 16'		
20' Roller	Notch ITA OR Swing Carriage	60" 72" 84"	3	117"	277"	8500lbs to 12'	16,199 lb	80"
						6500lbs to 15'		
						2500lbs to 20'		
22' Roller	Notch ITA OR Swing Carriage	60" 72" 84"	3	125"	300"	8500lbs to 12'	16,293 lb	None
						6500lbs to 15'		
						2500lbs to 22'		

*For other options, please contact factory

www.harlo.com

800-391-4151



[instagram.com/harloforklifts](https://www.instagram.com/harloforklifts)



[facebook.com/harloforklifts](https://www.facebook.com/harloforklifts)



[twitter.com/harloforklifts](https://www.twitter.com/harloforklifts)